

WASTE SEGREGATION FOR CHILDREN



Welcome to the world of segregated waste



Let us understand...

Most Preferable

Avoid

Reduce

Reuse

Recycle

Recover

Treat

Dispose

Least Preferable

- Why segregate ?
- Waste categories
- How to segregate ?
- What happens then ?



Waste Categories



WET WASTE



SANITARY WASTE



DRY WASTE



HAZARDOUS /E-WASTE



DEBRIS



REDUCE



REUSE



RECYCLE



RETHINK!

Where to start ?

Establish collection at home



WET WASTE

- Collect in a pedal bin lined with newspapers. DO NOT USE PLASTIC BAGS (Daily)

SANITARY WASTE

- Collect in newspaper bag kept in bathroom (Daily)

DRY WASTE

- Collect in a bag in the kitchen/utility (WEEKLY)

HAZARDOUS/e-WASTE

- Collect small items in a cover (QUARTERLY)

DEBRIS

- Collect in a bin in the utility (PERIODIC)



SAVE NATURE!

What is Wet Waste?

- ❑ Vegetable/Fruit waste
- ❑ Food waste except very oily waste
- ❑ Tea leaves/Coffee Powder
- ❑ Garden trimmings/leaves
- ❑ Flowers
- ❑ Pencil shavings
- ❑ Match sticks
- ❑ Shredded Newspaper
- ❑ Soiled Tissue Paper

WET WASTE



DO's

Coconut shells are not wet waste (*collect separately, can be used as fuel*)

Wet Waste Collection

□ Collection :

Covered bin in Kitchen lined with newspaper. Tear newspaper lengthwise to get 2 long pieces. Place them into the bin inner surface. **NO PLASTIC BAGS !**



What to do with Wet Waste?

- Composting
 - ▣ Leave-it-Pots
 - ▣ Conical Composting
 - ▣ Pit composting



Composting

- Biogas

- ▣ NIE-CREST:

Biogas plants from 1-150 kgs per day for homes, communities and institutions

- ▣ GPS-BioUrja:

Biogas plants from 100 kgs –3 Tons per day for communities and institutions



Biogas

What is Sanitary Waste?

DID YOU KNOW?

Disposable
diapers take 500
long years to
decompose

- Diapers
- Syringes
- Shaving Blades
- Ear Buds
- Old Tablets
- Bandages/Plasters
- Fingernails
- Hair/Animal Hair
- Scrap Cloth
- Animal bones



DO's

- Collect in a newspaper cone or bag
- Wash out poop from diapers in to the toilet before disposing baby diapers
- Reusable cloth diapers for your baby could be used at least at home

What is DRY WASTE?

Plastics

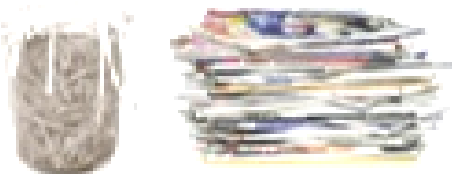


- ❑ Plastic bags, plastic bottles, plastic packaging
- ❑ Broken toys
- ❑ Bubble wrap
- ❑ Take-away containers*
- ❑ Food packets *
- ❑ Pickle packs*
- ❑ Milk Sachets*

*Food packets, pickle packs and take-away containers have to be thoroughly rinsed and dried before disposal

*Food covers that are too oily should be discarded with debris waste

Paper



- ❑ Tickets, Bills & statements*
- ❑ Envelopes & Covers
- ❑ Notices, pamphlets, paper wrappers
- ❑ Computer printouts
- ❑ Paper plates

*Tear any confidential papers before disposal

Papers that are oily and soiled tissue papers should be discarded with debris waste

Newspapers can be collected on a monthly basis and donated to NGOs who make bags for sanitary waste

Metal, Glass & Others



- ❑ Aerosol cans
- ❑ Aluminum cans/foil
- ❑ Metal bottle caps
- ❑ Glass bottles & jars
- ❑ Incandescent bulbs
- ❑ Tetrapack
- ❑ Thermocole/Styrofoam

WARNING: Do not crush aerosol cans, Rinse and dry glass bottles before disposal

Dispose broken glass/ceramic with debris waste after placing in a thick plastic/paper bag



DRY WASTE



- Food in a cover?
 - Dispose food contents into Wet Waste bin
 - Rinse cover if food contents were wet.
 - Dry at kitchen sink before disposing in your Dry Waste bag
- Squeeze your toothpaste, facewash etc to the last before disposal. Use an old toothbrush for this, saves at least a week's worth of stuff
- Empty and rinse out remains in shampoo or moisturizer bottles
- Open up and crush/fold paper cartons before disposal. Saves a load of space
- Dilute soap and hand wash concentrates with upto 2/3rds water. It will be still effective



Dry Waste collection



Collect DRY WASTE in bag* hung in your kitchen or utility area

*(*Do not use thin polythene bags to store Dry Waste at your home. Plastic woven bags or cloth bags are sturdy and reusable)*

Fix a bin on the cupboard door of your sink. Use this to collect your DRY WASTE

Rinse and dry milk covers. Collect in a box to dispose monthly to your local scrap dealer

- Once a week sort dry waste collected in your bag into Plastic, Paper, Metal & others. Dispose to common dry waste collection
- Please check with your Dry Waste collector on categories of sorting required.
- Apartments having adequate space and labour can have a post collection sorting established

List of DRY WASTE – to be collected



NOTE : For safety/security reasons, we have avoided sharp items like blades, scissors, razors, knives, broken glass pieces, etc.

- Mop Stick
- Used Mop cloth
- Toilet Cleaning Brush
- Brusher and Scrubs used for cleaning
- Used and dirty Foot Mats or door mats
- Bottles and container of pesticide
- Mosquito Repellent refill bottles
- Used Tooth Brush
- Chocolate wrappers (Small Toffees or Candy's)
- Chocolate Wrapper for big bars
- Butter Papers used
- Milk Covers
- Ghee/ Oil Packets
- Curd Packets
- Idly or any other Batter packets
- Oil Cans
- Package of food items
- Old Brooms
- Small broken Toys
- Thermocol Balls from bean bags
- Tissue Paper used for reasons other than sanitary/medical
- Small and destroyed Old Cushions
- Used bottles, tubes , cans of Shaving cream , Deodorant, creams , etc.
- Pieces of Aluminium Foils used to cover Ghee , Jam etc.

List of DRY WASTE – to be collected



NOTE : For safety/security reasons, we have avoided sharp items like blades, scissors, razors, knives, broken glass pieces, etc.

- Used paper pieces
- Broken Stationers' like pen, pencil eraser etc.
- Empty shampoo Bottle
- Empty Perfume bottle
- Thermocoal
- Empty Bottles of floor or toilet cleaners
- Covers with just silver lining inside , like the ones in Lay packets , kurkere packets etc.
- News paper
- Old Posts
- Soap Covers
- Small Tubs like the ones used for jam , cheese , yogurt etc.
- Plastic Covers used to pack Groceries etc.
- Expired Credit /Debit/loyalty Cards with magnetic Strip
- Unusable shoes
- Used Sachets of Shampoo, Tooth Paste , small quantity of Horlicks/Bournvita etc.
- Biseleri kind of water Bottles
- Tetra Packets (Juices, Milks etc.)
- Small carton Boxed like in Corn Flakes etc.
- Used Tooth Paste Tubes
- Broken house hold Plastic items Tin Bottles , like Pepsi cans etc.

What is Hazardous/E-Waste?

- Hazardous Waste
 - Paints
 - Automobile Lubricants
- E-waste
 - Dry Cells (batteries)
 - Car/2-wheeler batteries
 - Fluorescent lamps
 - Mobile
 - Chargers
 - Computer peripherals
 - CDs
 - .. anything with a plug



Collect small items such as batteries in a cover



Do not break CFL's and Tube Lights (Fluorescent lamps)



Maintenance personnel should use industrial grade gloves while handling haz/e-waste



What is Debris Waste?

- ❑ Sweeping Dust
- ❑ Oily Plastic/paper
- ❑ Soiled scrap cloth
- ❑ Rubber waste (slippers)
- ❑ Gift paper/Gift wrapping
- ❑ Foil covers (lays/kurkure packets)
- ❑ Construction debris



